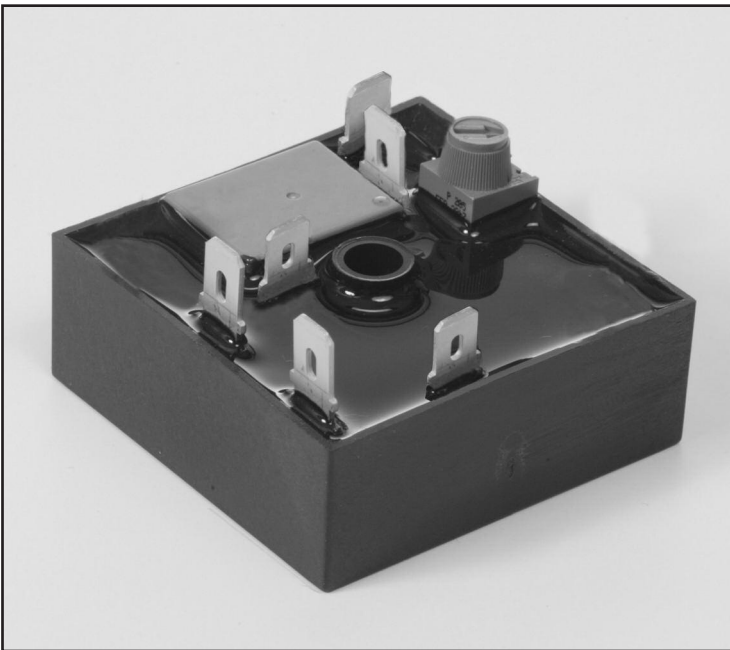


Timing Mode: **RETRIGGERABLE SINGLE SHOT**

Category: **TIMER WITH RELAY**

Series: **TGMPL**

MISSING PULSE DETECTOR / WATCHDOG

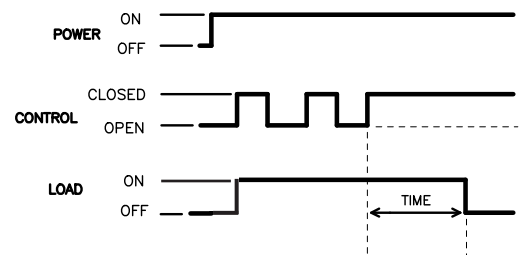


TGMPL Timers

TGMPL series Cube Relay Single Shot timers are a unique combination of digital CMOS timing circuitry with a relay output in a compact 2" x 2" configuration. These units provide the same functional performance as plug-in relay timers, but at significant cost savings.


Timing Mode

input voltage is applied continuously - when control switch closes the relay transfers, if switch closures happen within set time period, relay stays closed. If control switch stays closed or open longer than set time, relay opens.

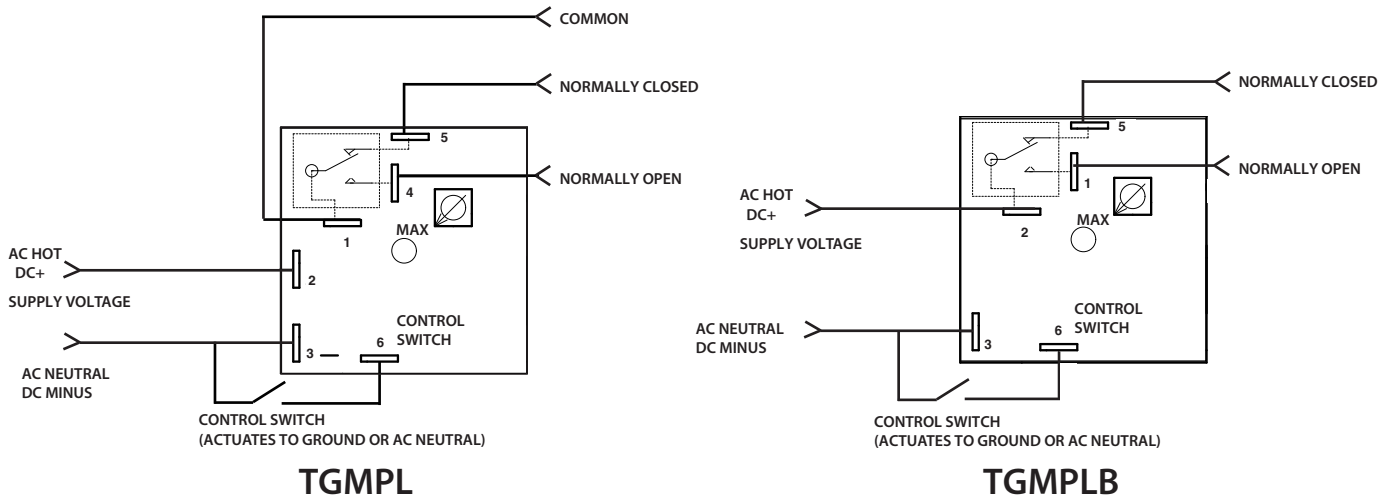


FEATURES

- High current-carrying capacity up to 10 amps
- Transient protected
- 100% Load isolation
- No leakage in N.O. position
- No heat sinking required
- Available in any time delay period required

- Digital CMOS timing
- No minimum load required
- Totally encapsulated for protection from harsh environments
- 100 % Operational testing before shipping
- 
- RoHS compliance available

BASIC WIRING AND DIMENSIONS



SPECIFICATIONS

Input Voltage:

VDC: 12, 24 or 48
 VAC: 24, 48, 120 or 230, 50/60Hz

Time Delay:

Timing Mode: Pulse Detector
Type: Digital CMOS
Time Range: 0.2 second to 24 hours
Time Adjustments: Factory-fixed time period; variable, with adjustments on timer, or terminals for external resistor or potentiometer

Repeatability: ±0.5%

Setting Accuracy: Fixed time period: ±10% of nominal time.

Variable time range:
 +15% -5% max. time, -10% min. time

Reset/Recycle Time: 25 milliseconds

Initiate Time: 6 milliseconds or less

Relay Life Expectancy:

Mechanical: 20 million operations
Electrical: 100,000 operations

Protection:

Polarity Protection: All DC units have reverse polarity protection
Transient Protection: 18 joules
Dielectric Strength: 1800V RMS 60Hz

Temperature Ranges:

Storage: -40°C to +85°C
Operating: -25°C to +65°C

Physical Data:

Mounting: Surface with one #8 screw
Connection & Termination: 0.25" quick connects

Note: When using a proximity switch for control unit, a snubber may be required to bypass leakage current

OPTIONS SELECTION

Mode of Operation	Series	Input Voltage	Examples of Time Ranges	Time Adjustment Method	Relay Output Form	Options		
Retriggerable Single Shot (Watchdog)	TGMPL TGMPLB	1	120 VAC	VARIABLE TIME PERIODS 0001 0.5 to 1 sec. 0010 .1 to 10 sec. 0100 1 to 100 sec. 1000 10 to 1000 sec. Any range up to 24 hours available. FIXED TIME PERIODS Specify time in full seconds or hours followed by the letter "S" or "H" and the decimal amount of the main time unit. Examples: 5S5 is 5.5 secs 5H5 is 5.5 hours	A Screwdriver Adj., Variable, integral. C Fixed, internal, factory set.	1	SPDT	H 10 Amps
		2	230 VAC			2	SPST (N.O.)	
		3	24 VAC					
		4	24-28 VDC					
		5	48 VAC					
		6	48 VDC					
		7	12 VDC					
		8	Any in between AC voltage (specify)					
		9	Any in between DC voltage (specify)					

Specifications subject to change without notice.