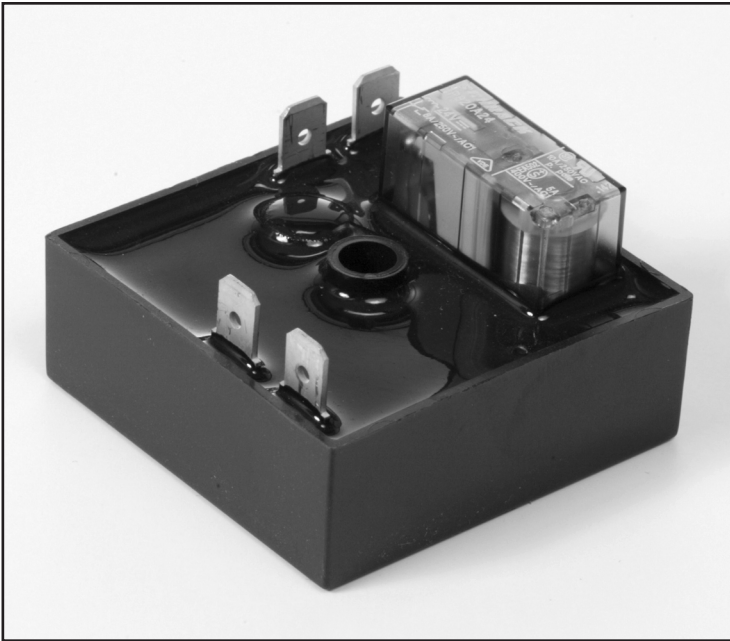


Timing Mode: **TRUE OFF DELAY**  
Category: **TIMER WITH RELAY**  
Series: **TGMT**

## CUBE RELAY, 10 AMPS



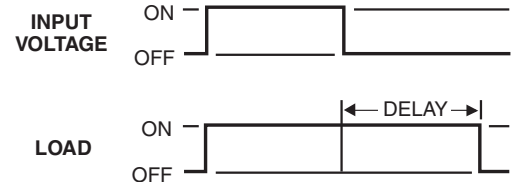
### TGMT Timers

TGMT series Cube Relay True Off Delay timers are a unique combination of digital CMOS timing circuitry with a relay output in a compact 2" x 2" configuration.

For users of pneumatic timers, these units offer the many advantages of electronic timing with a relay output. They provide the same functional performance as plug-in relay timers, but at significant cost savings.

### Timing Mode

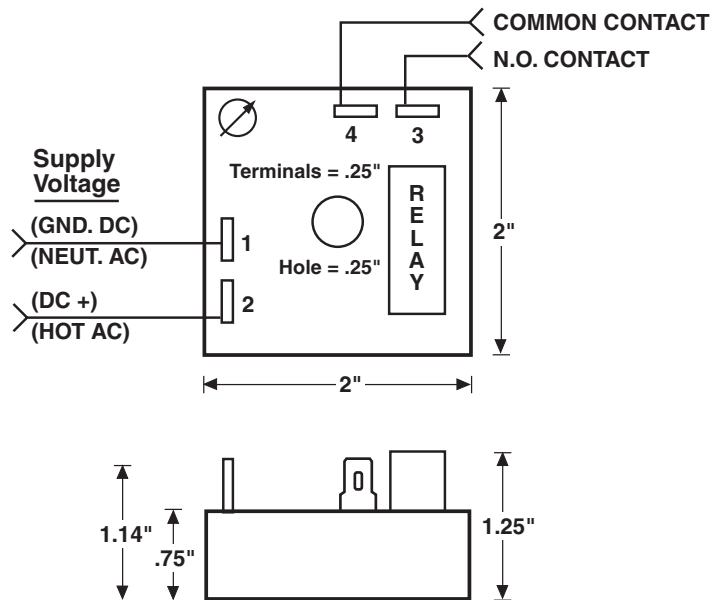
Application of the supply voltage energizes the output relay. The timing period begins upon removal of the supply voltage, as this unit will continue to time with no input voltage applied. At the conclusion of the timing period the output relay is de-energized. Reapplication of input voltage before the delay expires resets the time period.



### FEATURES

- High current-carrying capacity up to 10 amps
- 100% Load isolation
- No leakage in N.O. position
- No heat sinking required
- Available in time delay periods up to 600 sec.
- Digital CMOS timing
- Transient protected
- No voltage drop across contacts
- Totally encapsulated for protection from harsh environments
- 100% Operational testing before shipping
- RoHS compliance available

## BASIC WIRING AND DIMENSIONS



## SPECIFICATIONS

**Input Voltage:** VDC: 12 or 24

VAC: 24, 50/60 Hz

**Time Delay:**

*Timing Mode:* True Off Delay

*Type:* Digital CMOS

*Time Range:* 0.5 to 600 seconds

*Time Adjustments:* Variable, with adjustments on timer, or terminals for external resistors or potentiometers

**Repeatability:**  $\pm 0.5\%$

**Setting Accuracy:** Fixed time period:  $\pm 10\%$  of nominal time

Variable time range:

+15% -5% max. time, -10% min. time

**Reset/Recycle Time:** 100 milliseconds minimum

**Initiate Time:** 100 milliseconds minimum

**Relay Life Expectancy:**

*Mechanical:* 20 million operations

*Electrical:* 100,000 operations at max. load

**Protection:**

*Polarity Protection:* All DC units have reverse polarity protection

*Transient Protection:* 18 joules

*Dielectric Strength:* 1800V RMS 60 Hz

**Temperature Ranges:**

*Storage:* -40°C to +65°C

*Operating:* -25°C to +80°C

**Physical Data:**

*Mounting:* Surface with one #8 screw

*Connection & Termination:* 0.25" quick connects

## OPTIONS SELECTION

| Mode of Operation | Series | Input Voltage | Time Ranges  | Time Adjustment Method  | Relay Output Form              | Relay Rating       |
|-------------------|--------|---------------|--|---|--------------------------------|--------------------|
| True-Off Delay    | TGMT   | 3 24 VAC      | <b>FIXED TIME PERIODS</b>  | A Variable, integral, knob on timer.<br>C Fixed, internal, factory set. | 2 SPST (N.O.)<br>3 SPST (N.C.) | H 10 Amps standard |
|                   |        | 4 24 VDC      | 0001 .05 to 1 sec.<br>0010 0.1 to 10 sec.<br>0100 1 to 100 sec.<br>0300 5 to 300 sec.<br>0600 10 to 600 sec.                     |   |                                |                    |
|                   |        | 7 12 VDC      | <b>FIXED TIME PERIODS</b>  |   |                                |                    |
|                   |        |               | Specify time in full seconds followed by the letter "S" and the decimal amount of seconds:<br><b>Example:</b> 5S5 is 5.5 seconds |   |                                |                    |

*Specifications subject to change without notice.*