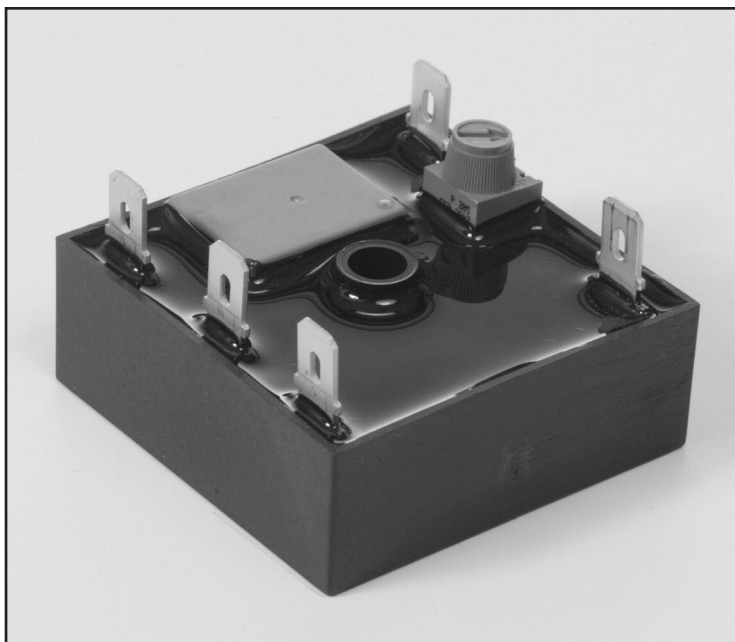


Timing Mode: **REPEAT CYCLE, ON/OFF**
Category: **TIMER WITH RELAY**
Series: **TGKA**

CUBE RELAY, 10-30 AMPS



TGKA Timers

TGKA series Cube Relay Repeat Cycle On/Off timers are a unique combination of solid state timing circuitry with a relay output in a compact 2" x 2" configuration. They have equal "On" and "Off" times.

These timers offer the many advantages of a relay output and provide the same functional performance as plug-in relay timers, but at significant cost savings.

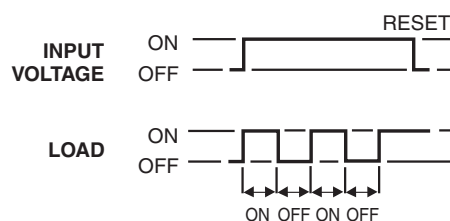
Timing Mode

Application of input voltage to the timer starts the "On" time delay, and energizes the load.




At the end of the "On" time delay, the load is de-energized, and the "Off" time delay starts.

At the end of the "Off" time delay, the load is again energized, the timer returns to the "On" time delay, and the cycling continues as long as input voltage is applied.

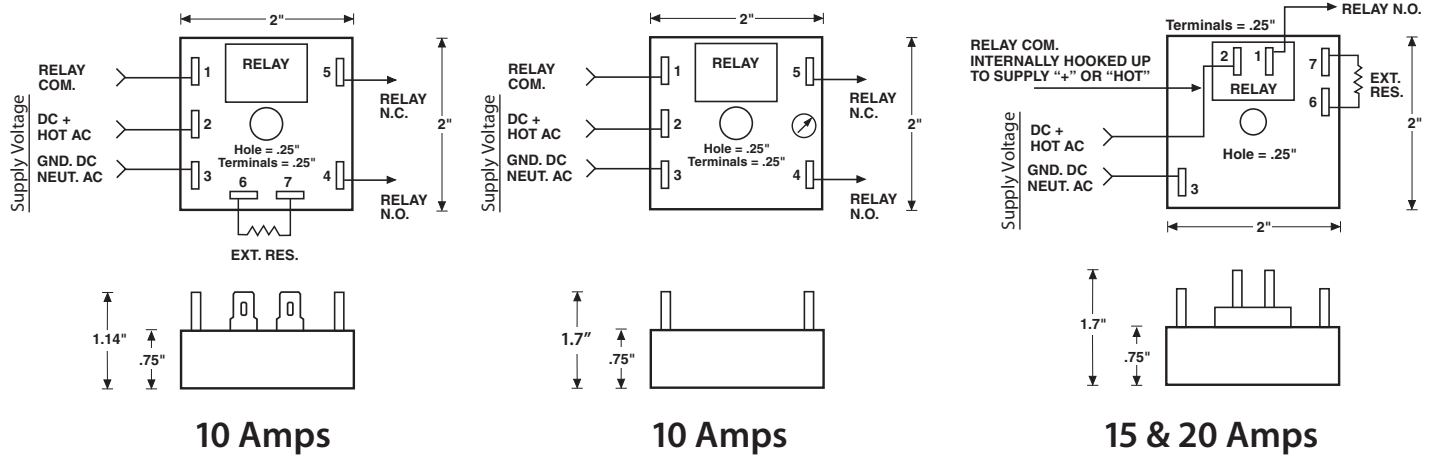
Removal of the input voltage resets the timer.



FEATURES

- High current-carrying capacity up to 30 amps
- 100% Load isolation
- No leakage in N.O. position
- No heat sinking required
- Available in any time delay period required
- Digital CMOS timing
- Transient protected
- No minimum load required
- Totally encapsulated for protection from harsh environments
- 100% Operational testing before shipping
-   
- RoHS compliance available

BASIC WIRING AND DIMENSIONS



See page 177 for DPDT and 30 Amp Diagrams

SPECIFICATIONS

Input Voltage: VDC: 12, 24-28, or 48

VAC: 24, 48, 120, or 230, 50/60Hz

Optional: Any in-between AC or DC voltage

Time Delay:

Timing Mode: Repeat Cycle On/Off

Type: Digital CMOS

Time Range: 0.1 second to 24 hours

Time Adjustment: Factory-fixed time period;
variable, with knob on timer,
or terminals for external resistor
or potentiometer

Repeatability: $\pm 0.5\%$

Setting Accuracy: *Fixed time period:* $\pm 10\%$ of nominal time;

$\pm 1\%$ optional

Variable time range:

+15% -5% max. time, -10% min. time

Reset/Recycle Time: 25 milliseconds

Initiate Time: 6 milliseconds or less

Life Expectancy:

Mechanical: 20 million operations

Electrical: 100,000 operations

Protection:

Polarity Protection: All DC units have reverse
polarity protection

Transient Protection: 18 joules

Dielectric Strength: 1800V RMS 60 Hz

Temperature Ranges:

Storage: -40°C to $+85^{\circ}\text{C}$

Operating: -25°C to $+65^{\circ}\text{C}$

Physical Data:

Mounting: Surface with one #8 screw

Connection & Termination: 0.25" quick connects

OPTIONS SELECTION

Mode of Operation	Series	Input Voltage	Examples of Time Ranges	Time Adjustment Method	Relay Output Form	Options
Repeat-Cycle On/Off	TGKA	1 120 VAC	VARIABLE TIME PERIODS	A Variable, integral, knob on timer.	1 SPDT	H 10 Amps
		2 230 VAC	0001 .1 to 1 sec.	B Variable, external, knob remote.	2 SPST (N.O.)	JN 15 Amps (1.0 HP)
		3 24 VAC	0010 .1 to 10 sec.			
		4 24-28 VDC	0100 1 to 100 sec.			
		5 48 VAC	1000 10 to 1000 sec.			
		6 48 VDC	Any range up to 24 hours available	C Fixed, internal, factory set.	3 SPST (N.C.)	J 20 Amps (1.5 HP)
		7 12 VDC	FIXED TIME PERIODS	D Fixed, external, resistor remote.	*4 DPDT	Z 30 Amps
		8 Any in between AC voltage (specify)	Specify time in full seconds or hours followed by the letter "S" or "H" and the decimal amount of the main time unit. Examples: 5S5 is 5.5 seconds 5H5 is 5.5 hours			
		9 Any in between DC voltage (specify)				

Specifications subject to change without notice.