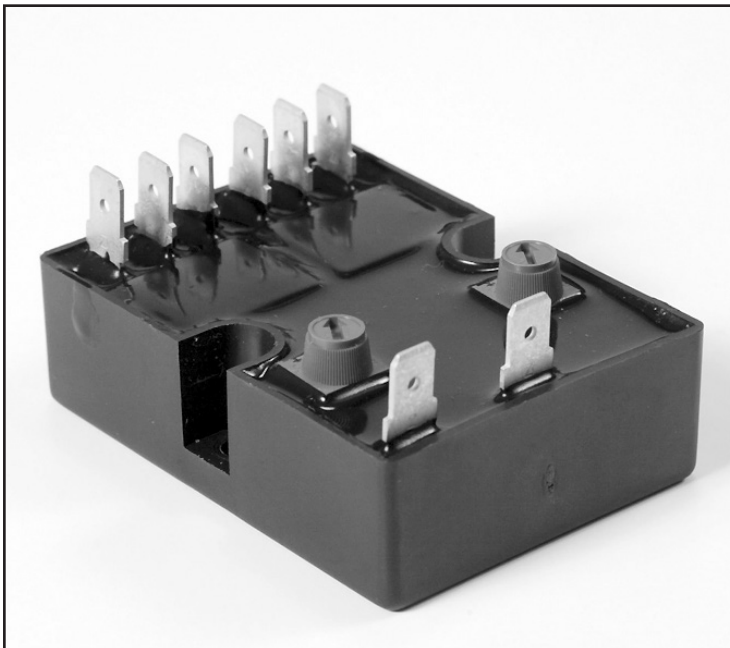


Timing Mode: **DELAY ON MAKE**
Category: **TIMER WITH RELAY**
Series: **TGCD**

DUAL RELAY, TWO OUTPUTS



TGCD Timers

The TGCD series offers two sequential Delay On Make timing relays in the same package.

Both delay outputs can be factory-fixed or individually adjusted.

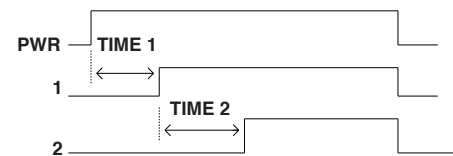
Timing Mode

Application of power to terminals 2 and 7 starts time period 1.

At the end of time period 1, relay 1 transfers (terminal 1 makes to terminal 3) and time period 2 starts.

At the end of time period 2, terminal 8 makes to terminal 6.

Reset is via power interrupt at any time during timing.

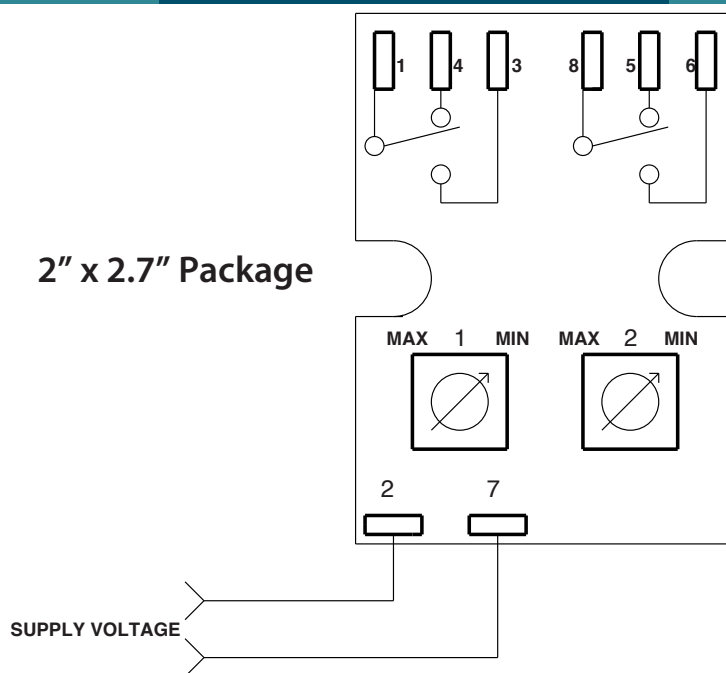


FEATURES

- Two Delay On Make relays in one timer
- No leakage in N.O. position
- Fixed or adjustable time periods
- Totally encapsulated for protection from harsh environments
- Transient protected
- 100% Operational testing before shipping
- 
- RoHS compliant

BASIC WIRING AND DIMENSIONS

072816



SPECIFICATIONS

Input Voltage:

VDC: 12 and 24/28 VDC
 VAC: 24 to 230 VAC – 6 ranges
 Special AC or DC voltages available

Time Delay:

Timing Mode: Dual On Delay
 Type: Digital – Relay Output
 Time Range: Up to 24 hours
 Time Adjustments: Variable, integral or external, factory-fixed

Repeatability: ±0.5% Fixed Conditions

Setting Accuracy: +20-0% Total with potentiometer

Reset/Recycle Time: Reset during Time 1: 50ms typ.
 Reset during Time 2: 25ms typ.
 Reset after Time 2: 25ms typ.

Relay Output Form: 2 SPDT relays

Relay Life Expectancy:

Mechanical: Up to 1 million operations
 Electrical: 100K cycles at maximum load

Protection: 18 joules varistor

Temperature Ranges:

Storage: -40°C to +85°C
 Operating: -25°C to +65°C

Physical Data:

Mechanical: Totally encapsulated
 Mounting: Surface with two #6 screws
 Connection & Termination: 0.25" quick connects

OPTIONS SELECTION

Mode of Operation	Series	Input Voltage	Examples of Time Ranges	Time Adjustment Method	Relay Output Form	Options
Dual On Delay	TGCD	1 120 VAC	VARIABLE TIME PERIODS 0001 0.5 to 1 sec. 0010 .1 to 10 sec. 0100 1 to 100 sec. 1000 10 to 1000 sec. Any range up to 24 hours available.	A Variable, integral, knob on timer. B Variable, external knob remote. C Fixed, internal, factory set. D Fixed, external, resistor remote.	1 SPDT 2 SPST (N.O.) 3 SPST (N.C.)	H 10 Amps
		2 230 VAC				
		3 24 VAC	FIXED TIME PERIODS Specify time in full seconds or hours followed by the letter "S" or "H" and the decimal amount of the main time unit. Examples: 5S5 is 5.5 secs 5H5 is 5.5 hours			
		4 24-28 VDC				
		5 48 VAC				
		7 12 VDC				
		8 Any in between AC voltage (specify)				
		9 Any in between DC voltage (specify)				

EXAMPLE TGCD 1 600/600 AA 22 HH 120 VAC, 600 seconds for both time periods, adjustable, SPST

Specifications subject to change without notice.